

SCOTTISHPOWER  
RENEWABLES

# East Anglia ONE North and East Anglia TWO Offshore Windfarms

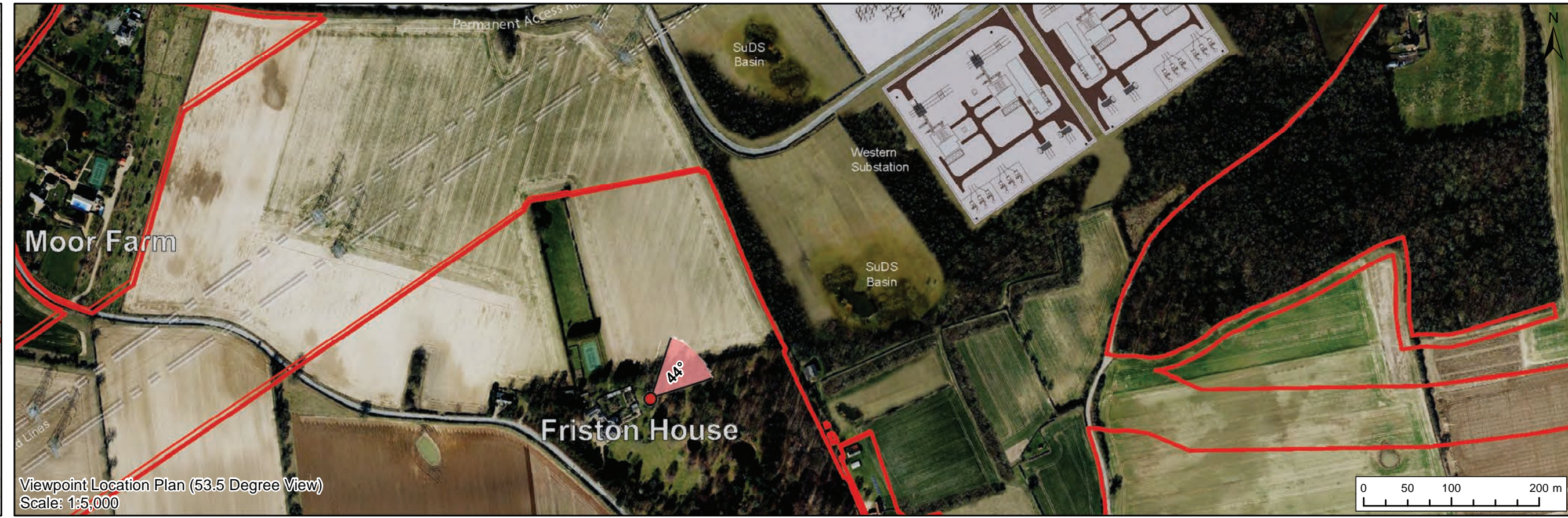
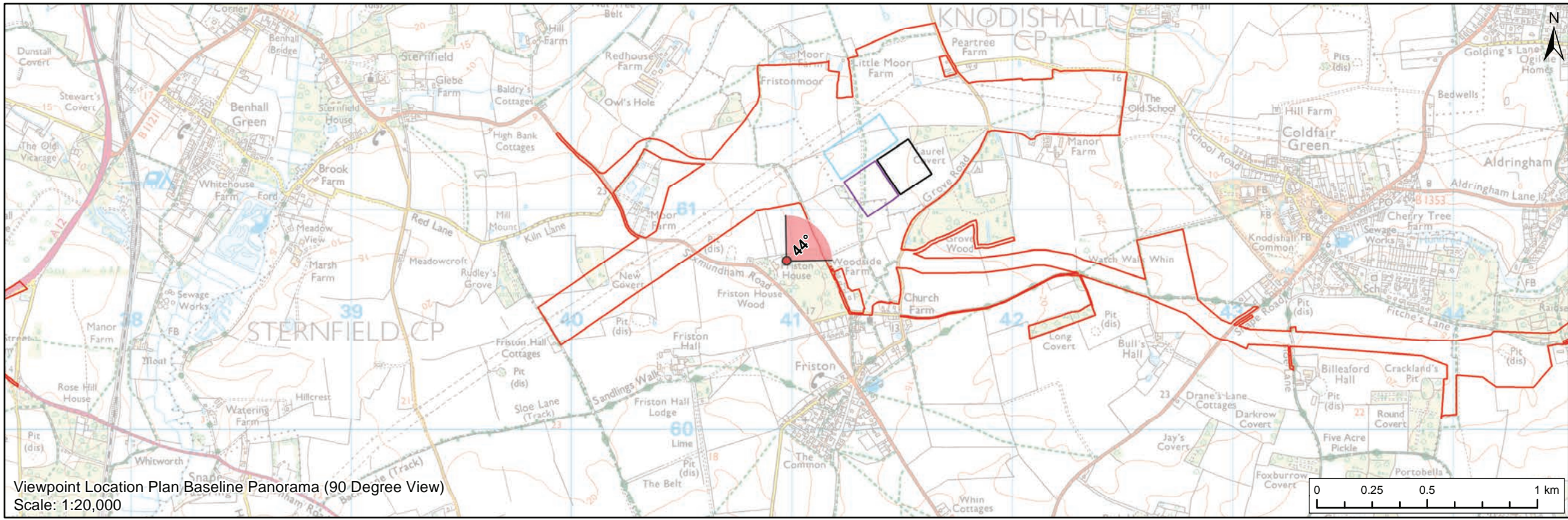
## Heritage Assessment Addendum Appendix 5 CHVP7 – Friston House (b) (Appendix 24.7, Figure 12 Update)

Applicants: East Anglia ONE North Limited and East Anglia TWO Limited  
Document Reference: ExA.AS-11.D4.V1\_005  
SPR Reference: EA1N\_EA2-DWF-ENV-REP-IBR-001191

Date: 13<sup>th</sup> January 2021  
Revision: Version 1  
Author: Royal HaskoningDHV

Applicable to **East Anglia ONE North** and **East Anglia TWO**





**Legend**

- East Anglia ONE North and East Anglia TWO Onshore Development Area
- Western Substation (190m x 170m)
- Eastern Substation (190m x 170m)
- National Grid Substation

**Viewpoint:**

- ▲ 90 Degree Field of View Viewpoint
- ▼ 53.5 Degree Field of View Viewpoint



Prepared:	LA	Scale @ A3	
Checked:	SM		
Approved:	LT		
1	13/01/2021	LA First Issue (OPEN)	
Rev	Date	By	Comment

<b>East Anglia ONE North and East Anglia TWO</b>		(Appendix 24.7, Figure 12-Update)	
<b>CHVP7: Friston House (b)</b>	<b>Rev</b>	<b>1</b>	Coordinate System: BNG
	<b>Date</b>	<b>13/01/21</b>	Datum: OSGB36
	<b>Figure</b>	<b>12a</b>	





Baseline Photograph (53.5 Degree Field of View)

View flat at a comfortable arm's length

<b>OS reference:</b> 640975 E 260769 N	<b>Horizontal field of view:</b> 53.5° (planar projection)	<b>Camera:</b> Canon EOS 5D Mark II
<b>Eye level:</b> 18 m AOD	<b>Principal viewing distance:</b> 812.5 mm	<b>Lens:</b> 50mm (Canon EF 50mm f/1.4)
<b>Direction of view:</b> 44°	<b>Paper size:</b> 841 x 297 mm (half A1)	<b>Camera height:</b> 1.5 m AGL
	<b>Correct printed image size:</b> 820 x 260 mm	<b>Date and time:</b> 07/03/2019, 15:57:53

Contains Ordnance Survey digital data © Crown copyright, All rights reserved 2020 Licence number 0100031673

**Figure: 12b**  
**CHVP7: Friston House (b)**





Visual representation of 1st year of operational phase  
 Photomontage of the proposed East Anglia ONE North and National Grid AIS Substation

View flat at a comfortable arm's length

<b>OS reference:</b>	640975 E 260769 N	<b>Horizontal field of view:</b>	53.5° (planar projection)	<b>Camera:</b>	Canon EOS 5D Mark II
<b>Eye level:</b>	18 m AOD	<b>Principal viewing distance:</b>	812.5 mm	<b>Lens:</b>	50mm (Canon EF 50mm f/1.4)
<b>Direction of view:</b>	44°	<b>Paper size:</b>	841 x 297 mm (half A1)	<b>Camera height:</b>	1.5 m AGL
		<b>Correct printed image size:</b>	820 x 260 mm	<b>Date and time:</b>	07/03/2019, 15:57:53

Contains Ordnance Survey digital data © Crown copyright, All rights reserved 2019 Licence number 0100031673

**Figure: 12c**  
**CHVP7: Friston House (b)**





Visual representation of 15th year of operational phase  
 Photomontage of the proposed East Anglia ONE North and National Grid AIS Substation

View flat at a comfortable arm's length

<b>OS reference:</b>	640975 E 260769 N	<b>Horizontal field of view:</b>	53.5° (planar projection)	<b>Camera:</b>	Canon EOS 5D Mark II
<b>Eye level:</b>	18 m AOD	<b>Principal viewing distance:</b>	812.5 mm	<b>Lens:</b>	50mm (Canon EF 50mm f/1.4)
<b>Direction of view:</b>	44°	<b>Paper size:</b>	841 x 297 mm (half A1)	<b>Camera height:</b>	1.5 m AGL
		<b>Correct printed image size:</b>	820 x 260 mm	<b>Date and time:</b>	07/03/2019, 15:57:53

Contains Ordnance Survey digital data © Crown copyright, All rights reserved 2019 Licence number 0100031673

**Figure: 12d**  
**CHVP7: Friston House (b)**





National Grid AIS Substation (0.45km)

Eastern Substation (0.60km)

Visual representation of 1st year of operational phase  
 Photomontage of the proposed East Anglia TWO and National Grid AIS Substation

View flat at a comfortable arm's length

<b>OS reference:</b>	640975 E 260769 N	<b>Horizontal field of view:</b>	53.5° (planar projection)	<b>Camera:</b>	Canon EOS 5D Mark II
<b>Eye level:</b>	18 m AOD	<b>Principal viewing distance:</b>	812.5 mm	<b>Lens:</b>	50mm (Canon EF 50mm f/1.4)
<b>Direction of view:</b>	44°	<b>Paper size:</b>	841 x 297 mm (half A1)	<b>Camera height:</b>	1.5 m AGL
		<b>Correct printed image size:</b>	820 x 260 mm	<b>Date and time:</b>	07/03/2019, 15:57:53

Contains Ordnance Survey digital data © Crown copyright, All rights reserved 2019 Licence number 0100031673

**Figure: 12e**  
**CHVP7: Friston House (b)**





National Grid AIS Substation (0.45km)

Eastern Substation (0.60km)

Visual representation of 15th year of operational phase  
Photomontage of the proposed East Anglia TWO and National Grid AIS Substation

View flat at a comfortable arm's length

<b>OS reference:</b>	640975 E 260769 N	<b>Horizontal field of view:</b>	53.5° (planar projection)	<b>Camera:</b>	Canon EOS 5D Mark II
<b>Eye level:</b>	18 m AOD	<b>Principal viewing distance:</b>	812.5 mm	<b>Lens:</b>	50mm (Canon EF 50mm f/1.4)
<b>Direction of view:</b>	44°	<b>Paper size:</b>	841 x 297 mm (half A1)	<b>Camera height:</b>	1.5 m AGL
		<b>Correct printed image size:</b>	820 x 260 mm	<b>Date and time:</b>	07/03/2019, 15:57:53

Contains Ordnance Survey digital data © Crown copyright, All rights reserved 2019 Licence number 0100031673

**Figure: 12f**  
**CHVP7: Friston House (b)**





Visual representation of 1st year of operational phase  
 Photomontage of the proposed East Anglia ONE North, East Anglia TWO and National Grid AIS Substation

View flat at a comfortable arm's length

<b>OS reference:</b>	640975 E 260769 N	<b>Horizontal field of view:</b>	53.5° (planar projection)	<b>Camera:</b>	Canon EOS 5D Mark II
<b>Eye level:</b>	18 m AOD	<b>Principal viewing distance:</b>	812.5 mm	<b>Lens:</b>	50mm (Canon EF 50mm f/1.4)
<b>Direction of view:</b>	44°	<b>Paper size:</b>	841 x 297 mm (half A1)	<b>Camera height:</b>	1.5 m AGL
		<b>Correct printed image size:</b>	820 x 260 mm	<b>Date and time:</b>	07/03/2019, 15:57:53

Contains Ordnance Survey digital data © Crown copyright, All rights reserved 2019 Licence number 0100031673

**Figure: 12g**  
**CHVP7: Friston House (b)**





Visual representation of 15th year of operational phase  
 Photomontage of the proposed East Anglia ONE North, East Anglia TWO and National Grid AIS Substation

View flat at a comfortable arm's length

<b>OS reference:</b>	640975 E 260769 N	<b>Horizontal field of view:</b>	53.5° (planar projection)	<b>Camera:</b>	Canon EOS 5D Mark II
<b>Eye level:</b>	18 m AOD	<b>Principal viewing distance:</b>	812.5 mm	<b>Lens:</b>	50mm (Canon EF 50mm f/1.4)
<b>Direction of view:</b>	44°	<b>Paper size:</b>	841 x 297 mm (half A1)	<b>Camera height:</b>	1.5 m AGL
		<b>Correct printed image size:</b>	820 x 260 mm	<b>Date and time:</b>	07/03/2019, 15:57:53

Contains Ordnance Survey digital data © Crown copyright, All rights reserved 2019 Licence number 0100031673

**Figure: 12h**  
**CHVP7: Friston House (b)**